

PERSPECTIVA CLIMÁTICA ESTACIONAL

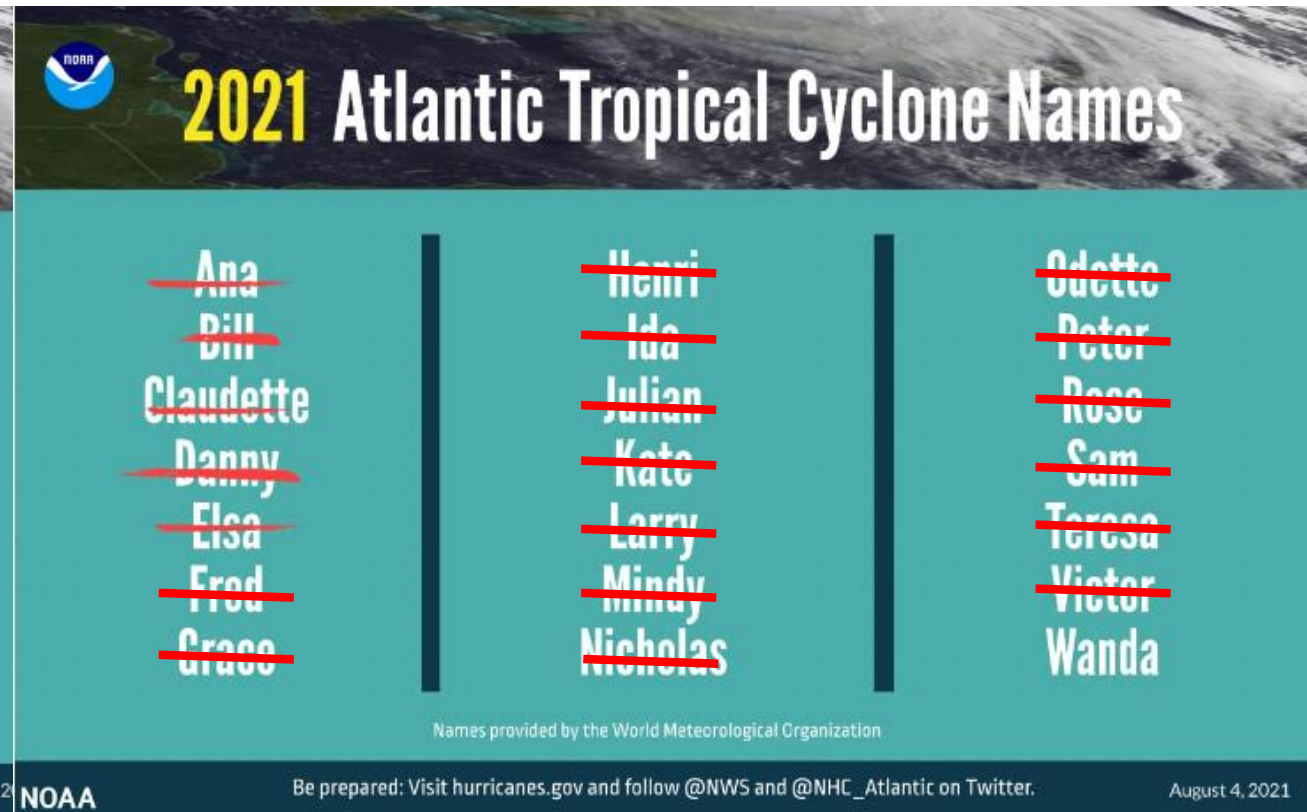
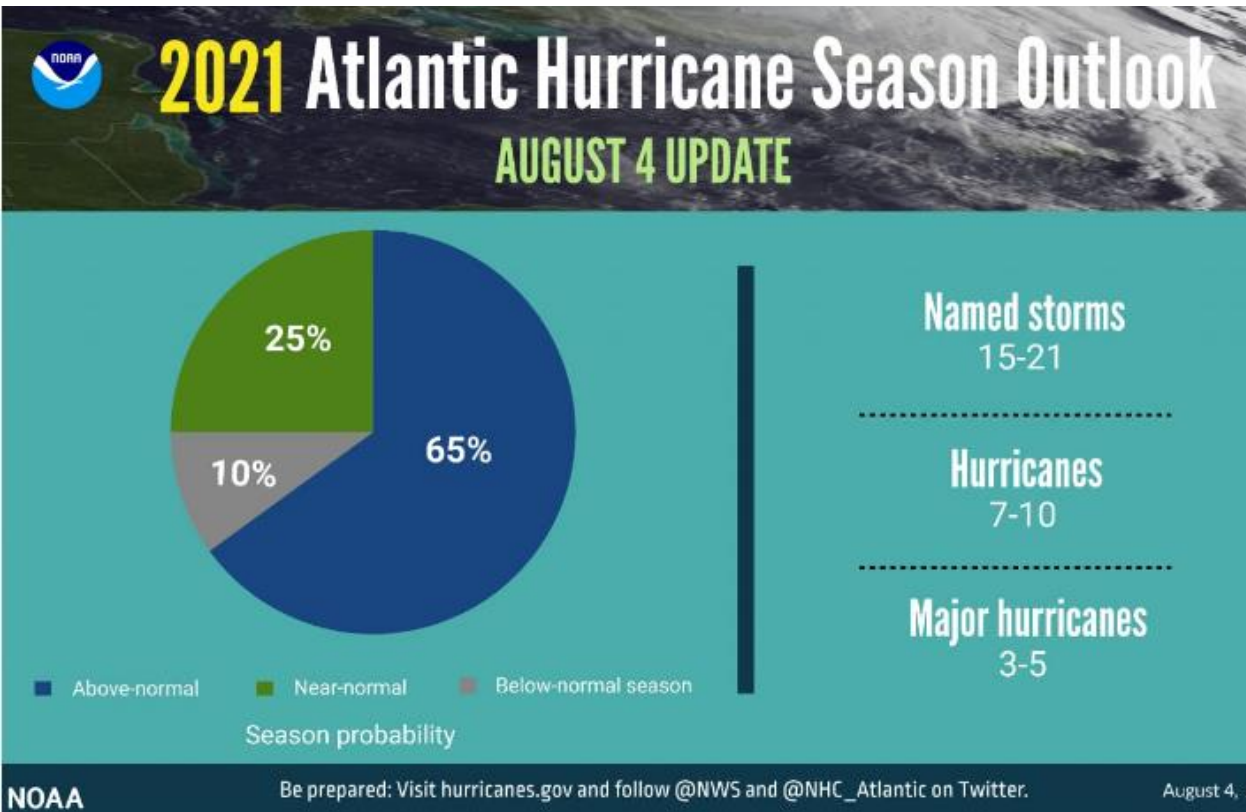
Oct 2021 - Feb 2022

HONDURAS

CENTRO NACIONAL DE ESTUDIOS
ATMOSFÉRICOS, OCEÁNICOS Y SÍSMICOS
CENAOS COPECO



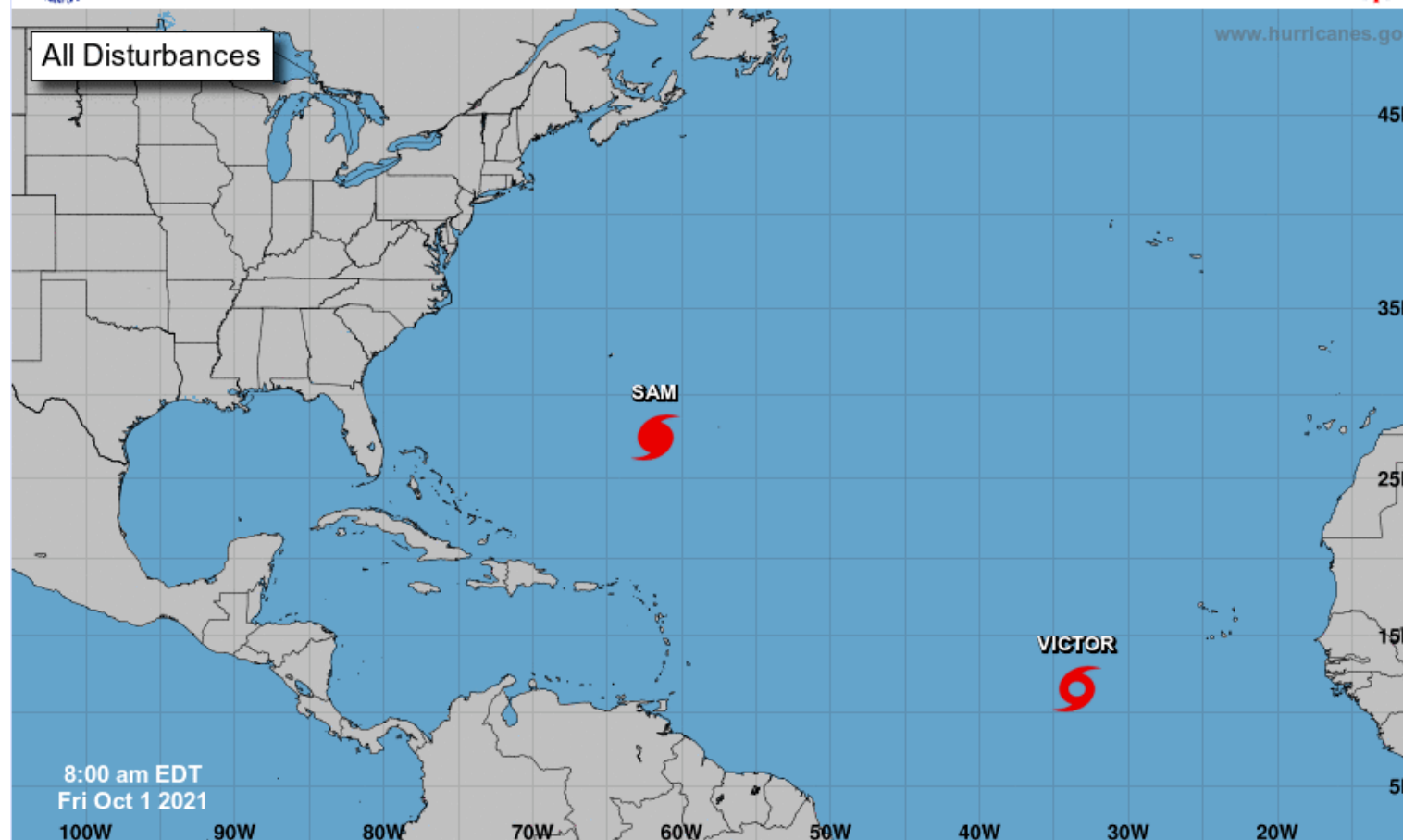
CENTRO NACIONAL DE HURACANES, NOAA



CENTRO NACIONAL DE HURACANES, NOAA



Five-Day Graphical Tropical Weather Outlook
National Hurricane Center Miami, Florida



Current Disturbances and Five-Day Cyclone Formation Chance: < 40% 40-60% > 60%
Tropical or Sub-Tropical Cyclone: Depression Storm Hurricane
 Post-Tropical Cyclone or Remnants

PRONÓSTICO UNIVERSIDAD DE COLORADO

2021 FORECAST AS OF 5 AUGUST 2021

Forecast Parameter	CSU Forecast	1991-2020 Average
Named Storms (NS)	18*	14.4
Named Storm Days (NSD)	80	69.4
Hurricanes (H)	8	7.2
Hurricane Days (HD)	35	27.0
Major Hurricanes (MH)	4	3.2
Major Hurricane Days (MHD)	9	7.4
Accumulated Cyclone Energy (ACE)	150	123
Net Tropical Cyclone Activity (NTC)	160	135

* Forecast includes Ana, Bill, Claudette, Danny and Elsa that have already formed

The final forecast for October-November Caribbean ACE in 2021 is 9, meaning a slightly above-average and well above-median October-November ACE is forecast this year

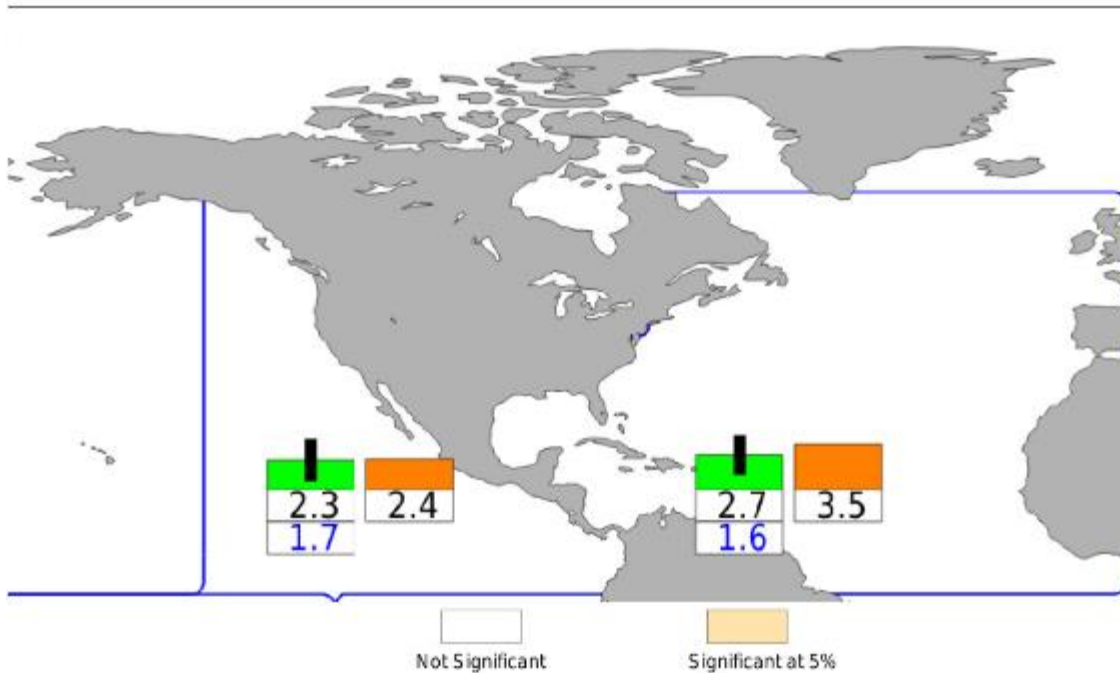
PRONÓSTICO UNIVERSIDAD MODELO EUROPEO

ECMWF Seasonal Forecast
Tropical Storm Frequency
Forecast start reference is 01/09/2021
Ensemble size = 51, climate size = 700

SEAS5
ONDJ FM 2021/22
Climate (initial dates) = 1993-2020

Forecast mean Standard deviation Climate mean

50°W 140°W 120°W 100°W 80°W 60°W 40°W 20°W

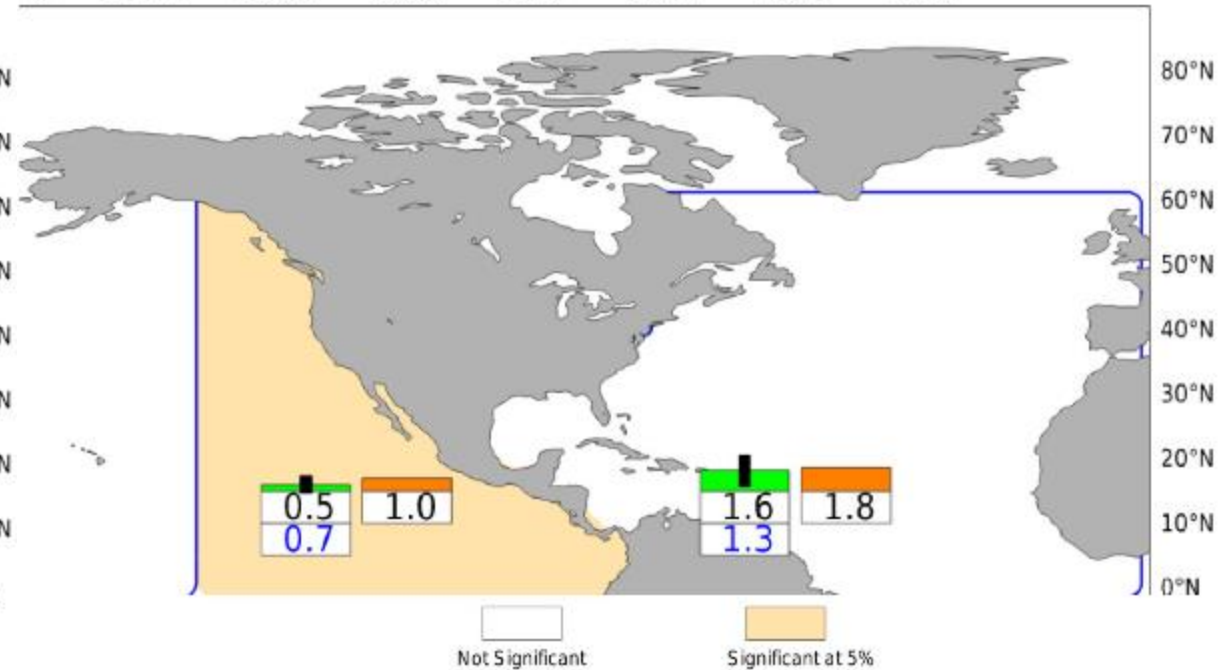


ECMWF Seasonal Forecast
Hurricane or typhoon Frequency
Forecast start reference is 01/09/2021
Ensemble size = 51, climate size = 700

SEAS5
ONDJ FM 2021/22
Climate (initial dates) = 1993-2020

Forecast mean Standard deviation Climate mean

140°W 120°W 100°W 80°W 60°W 40°W 20°W

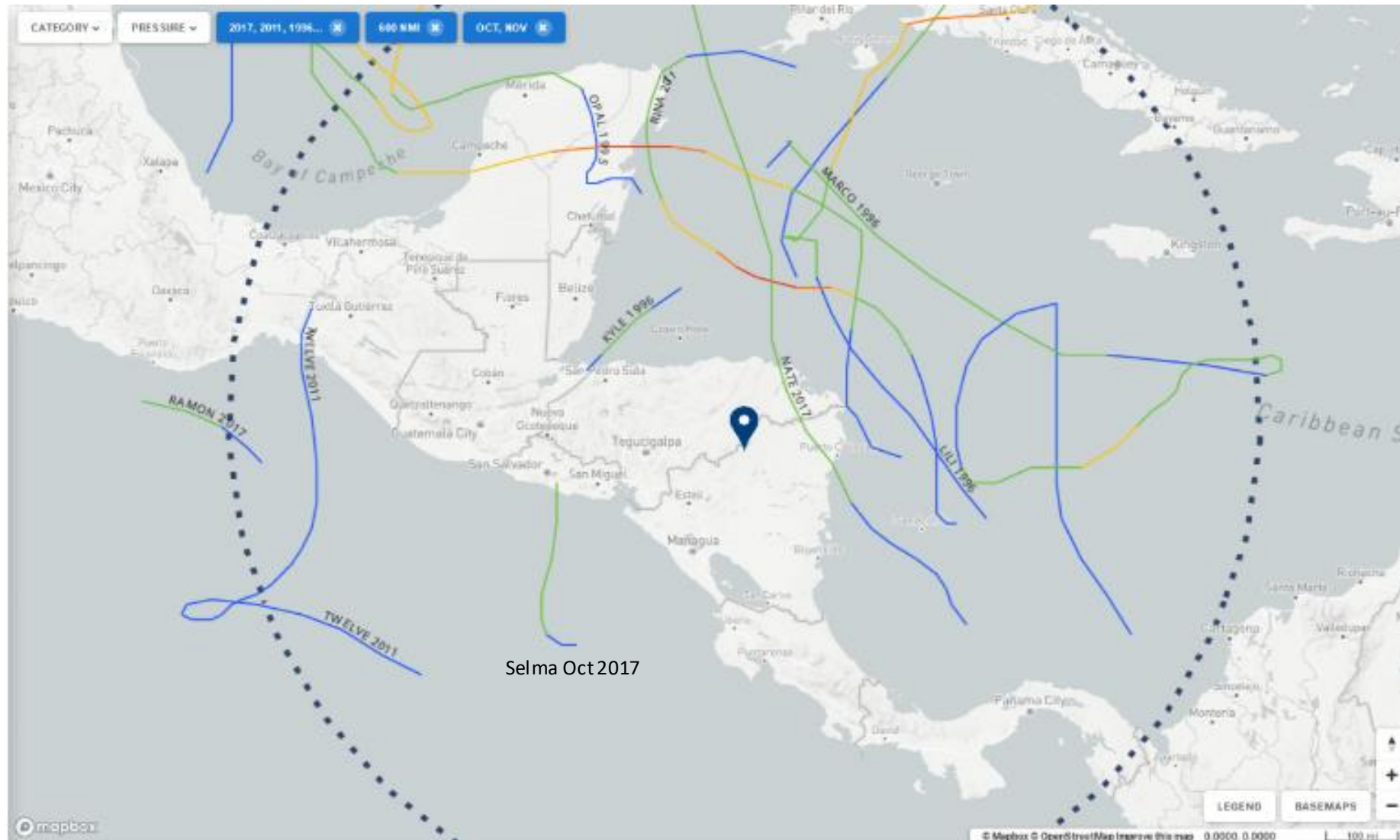


PRONÓSTICO UNIVERSIDAD DE COLORADO AÑOS ANÁLOGOS

Table 8: Analog years for 2021 with the associated hurricane activity listed for each year.

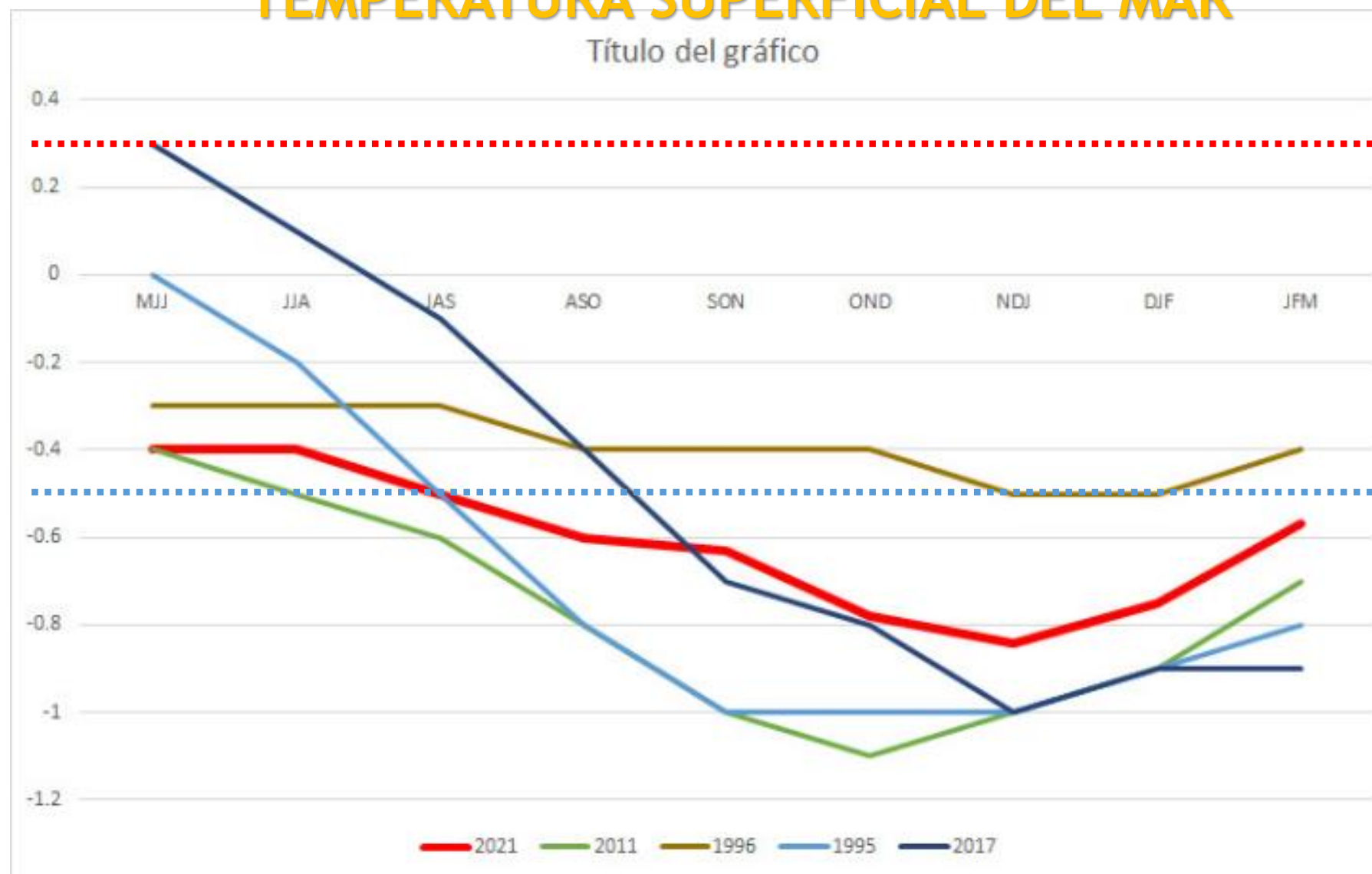
Year	NS	NSD	H	HD	MH	MHD	ACE	NTC
1996	13	79.00	9	45.00	6	13.00	166	192
2001	15	68.75	9	25.50	4	4.25	110	135
2008	16	88.25	8	30.50	5	7.50	146	162
2011	19	89.75	7	26.00	4	4.50	126	145
2016	15	82.25	7	27.75	4	10.25	143	156
2017	17	93.00	10	51.75	6	19.25	225	232
Average	15.8	83.5	8.3	34.4	4.8	9.8	153	170
2021 Forecast	18	80	8	35	4	9	150	160

PRONÓSTICO UNIVERSIDAD DE COLORADO AÑOS ANÁLOGOS



TEMPERATURA SUPERFICIAL DEL MAR

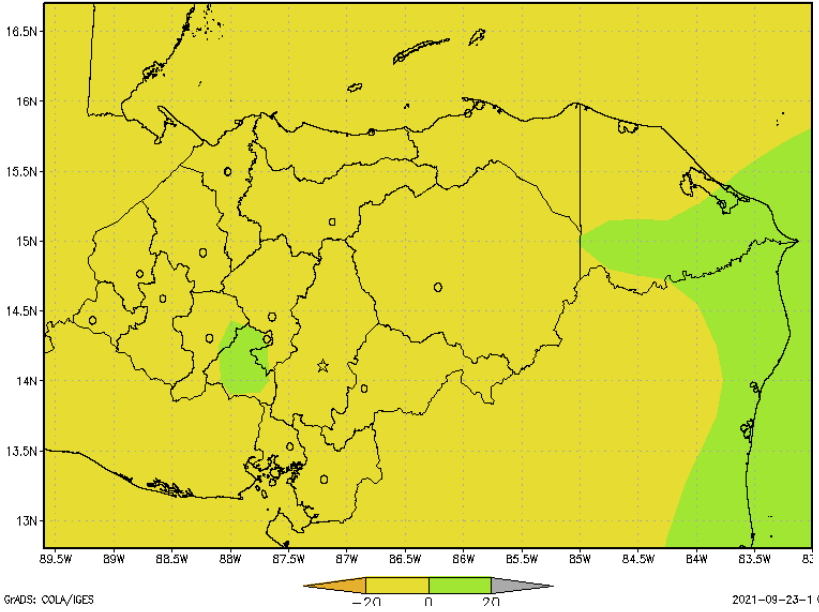
Título del gráfico



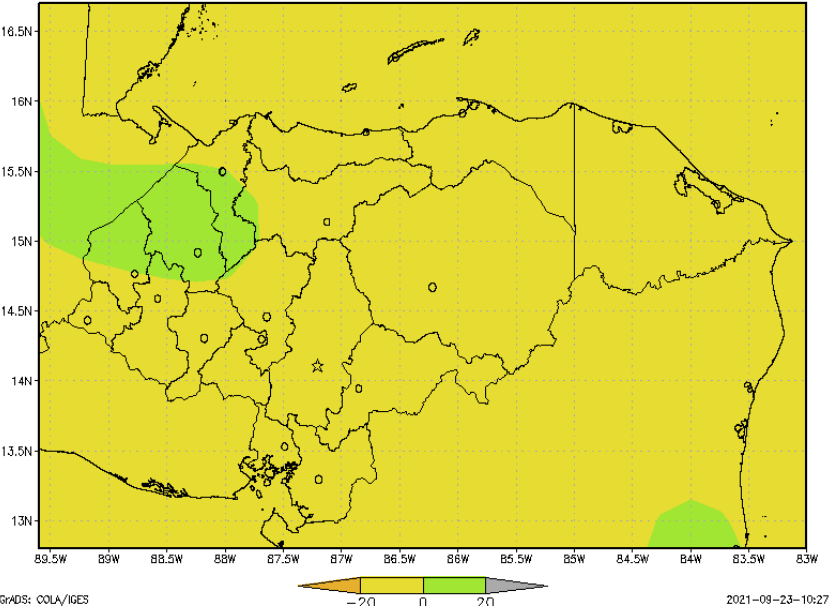
Pronóstico de lluvia Oct 2021 Feb 2022, promedio de modelos N.A.



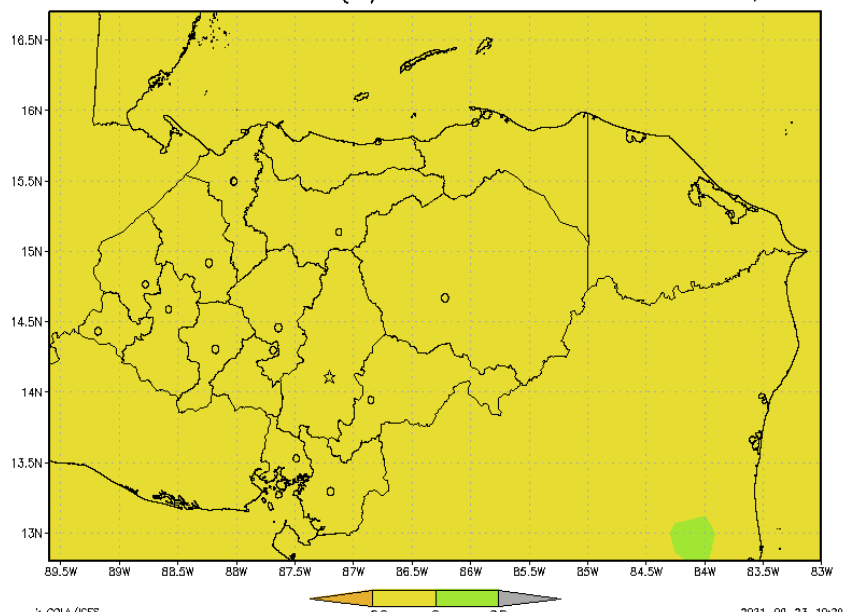
"Pronostico de anomalia (%) de lluvia en octubre 2021, NMME"



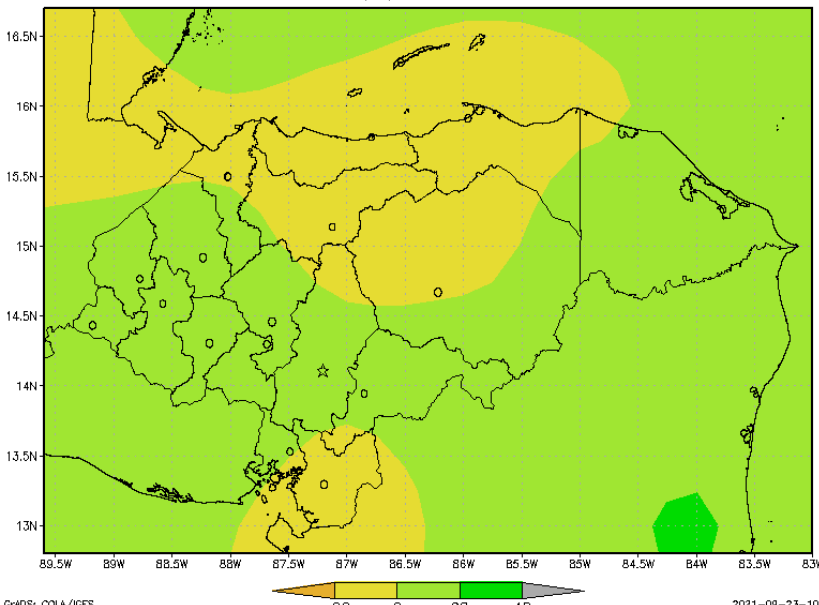
"Pronostico de anomalia (%) de lluvia en Noviembre 2021, NMME"



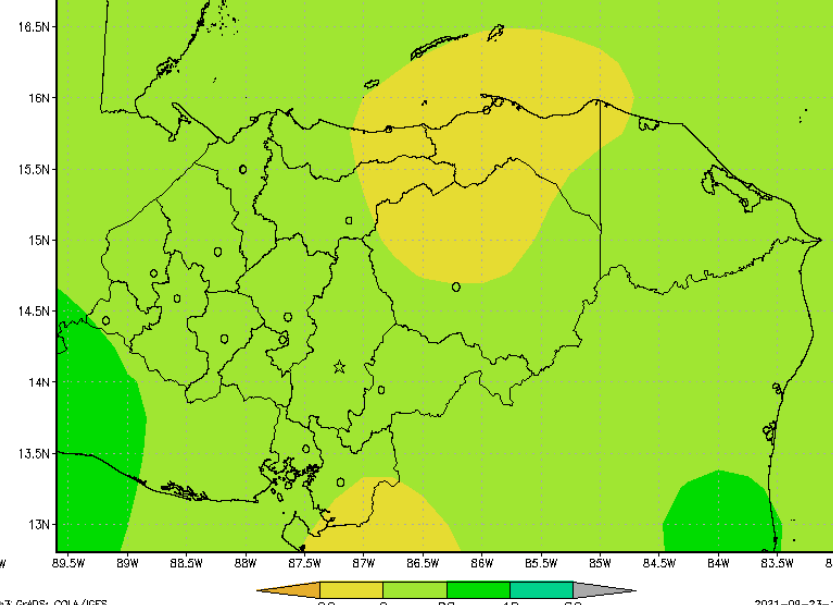
"Pronostico de anomalia (%) de lluvia en Diciembre 2021, NMME"



"Pronostico de anomalia (%) de lluvia en Enero 2022, NMME"

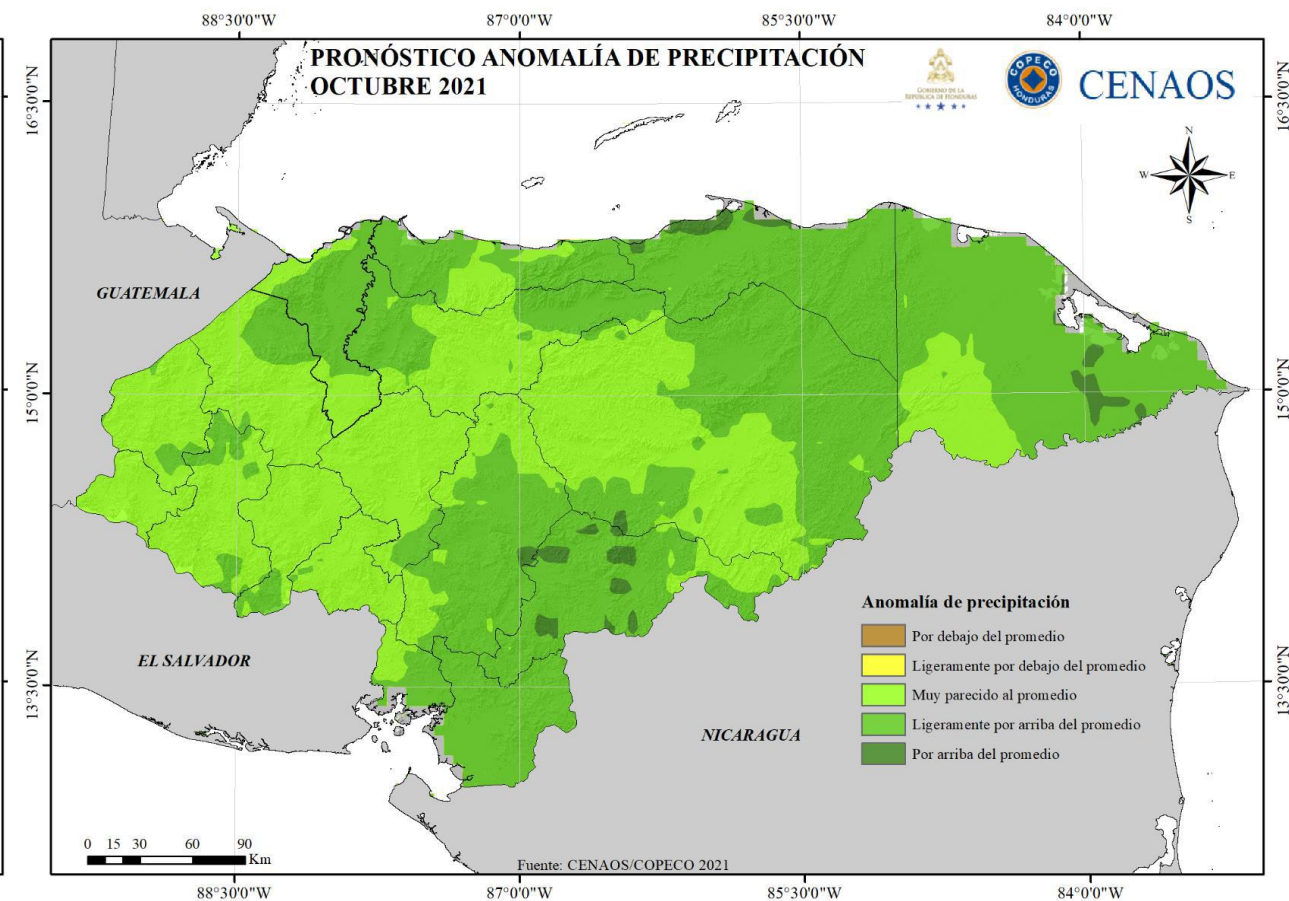
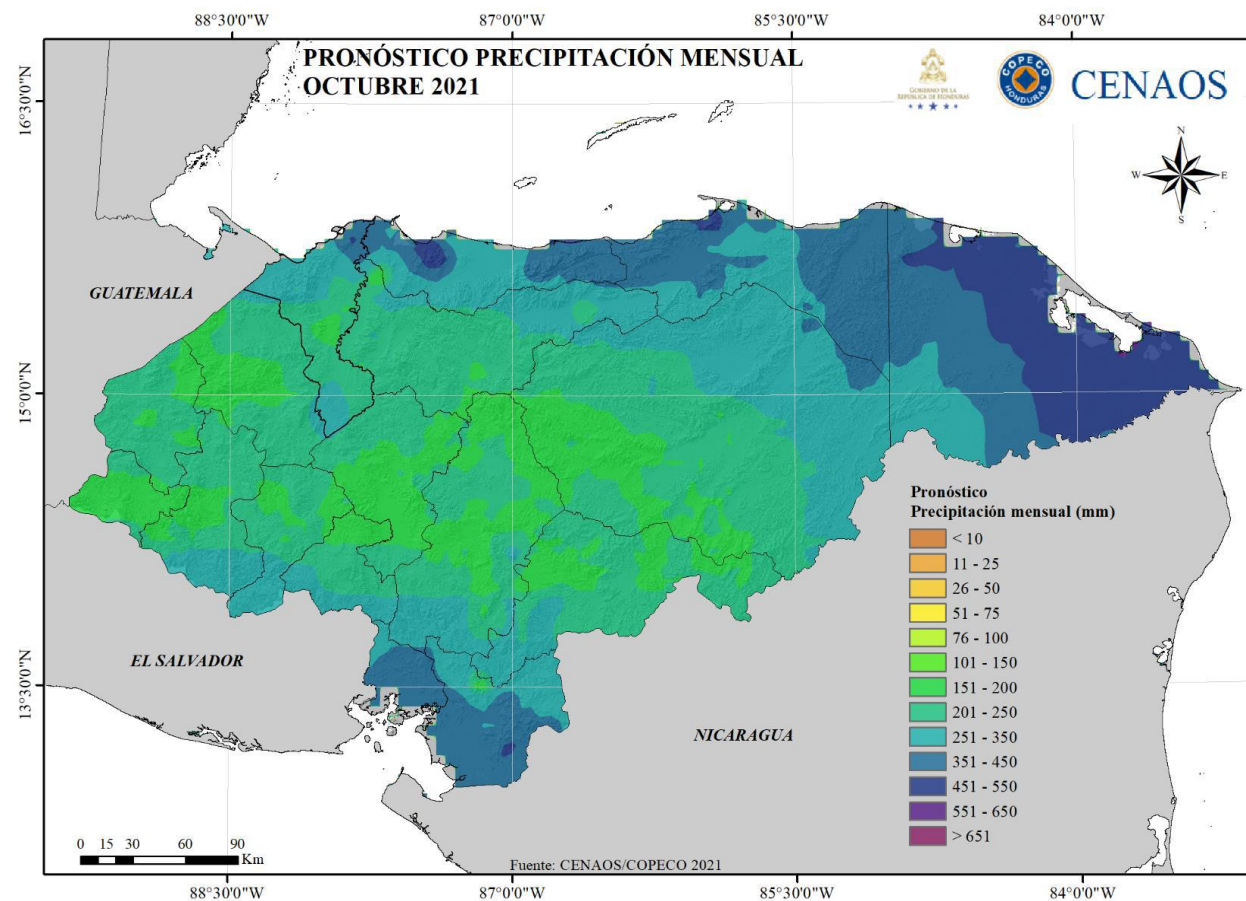


"Pronostico de anomalia (%) de lluvia en Febrero 2022, NMME"

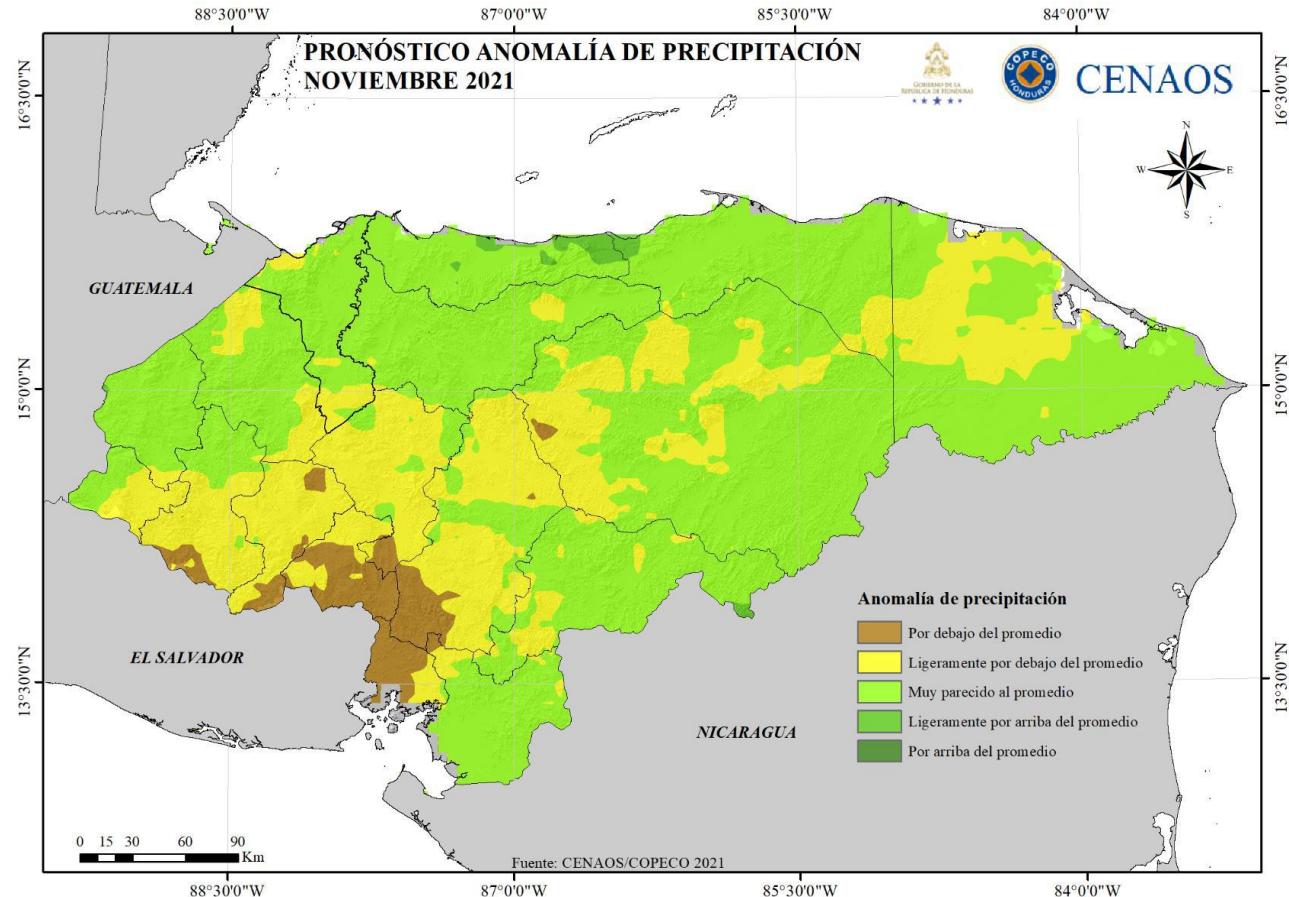
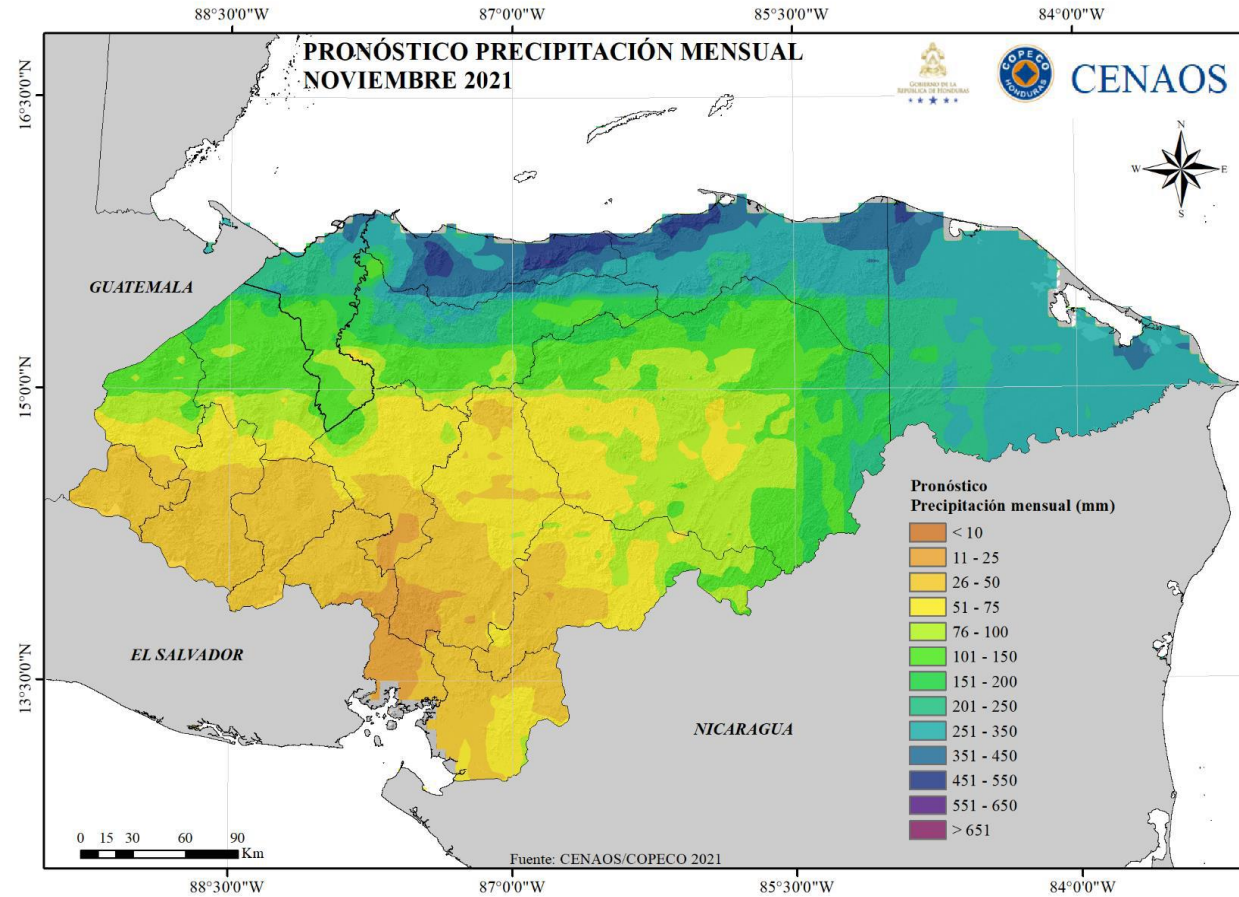


Fuente: https://www.cpc.ncep.noaa.gov/products/international/nmme/nmme_monthly_body.html

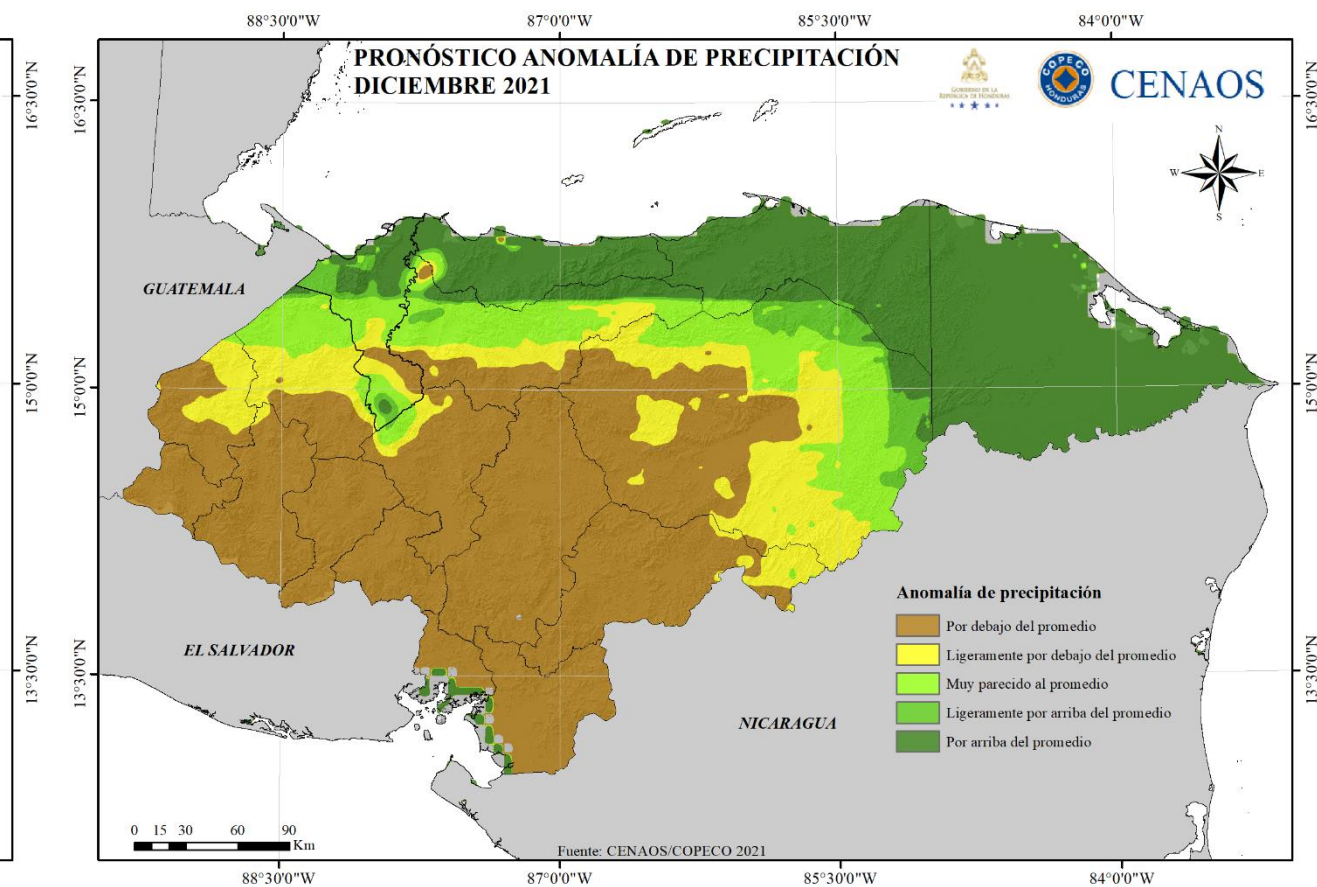
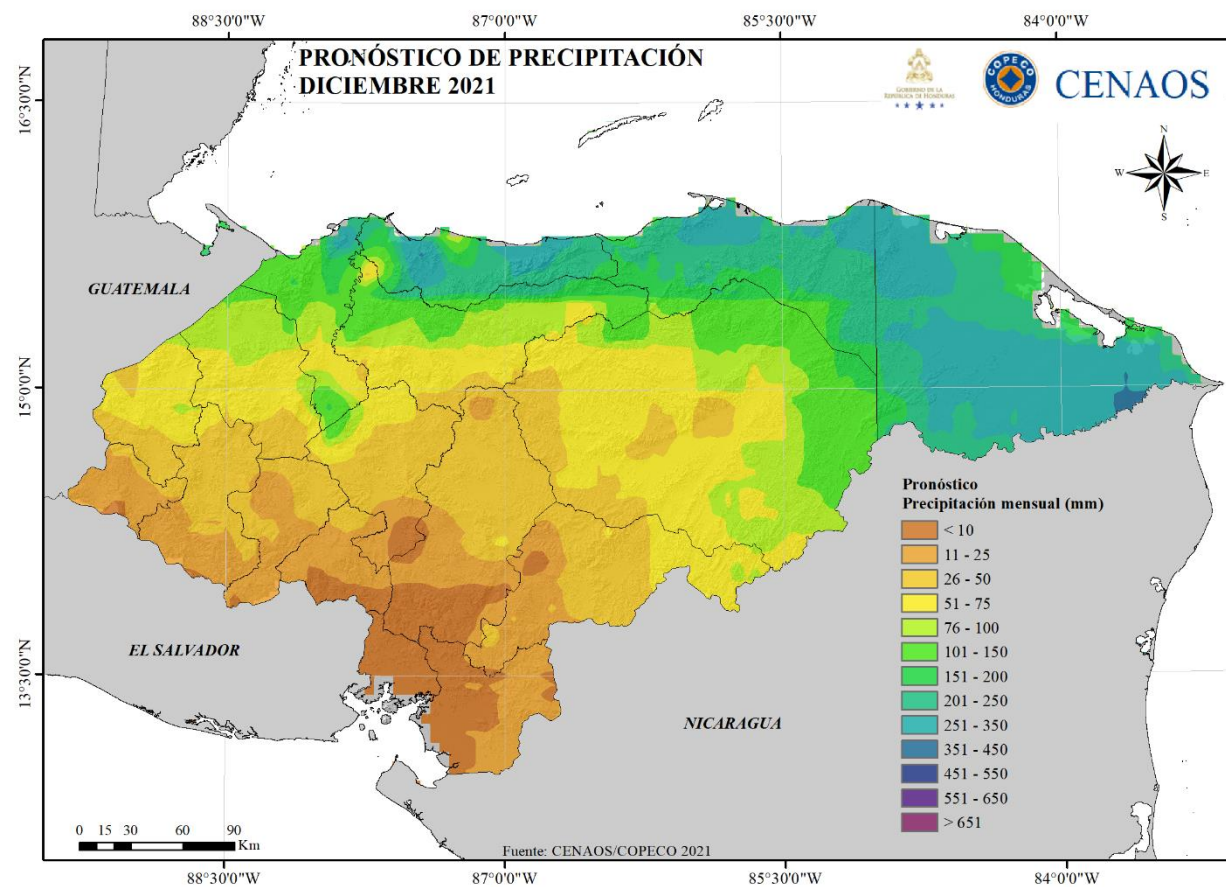
Pronóstico de lluvia Octubre 2021



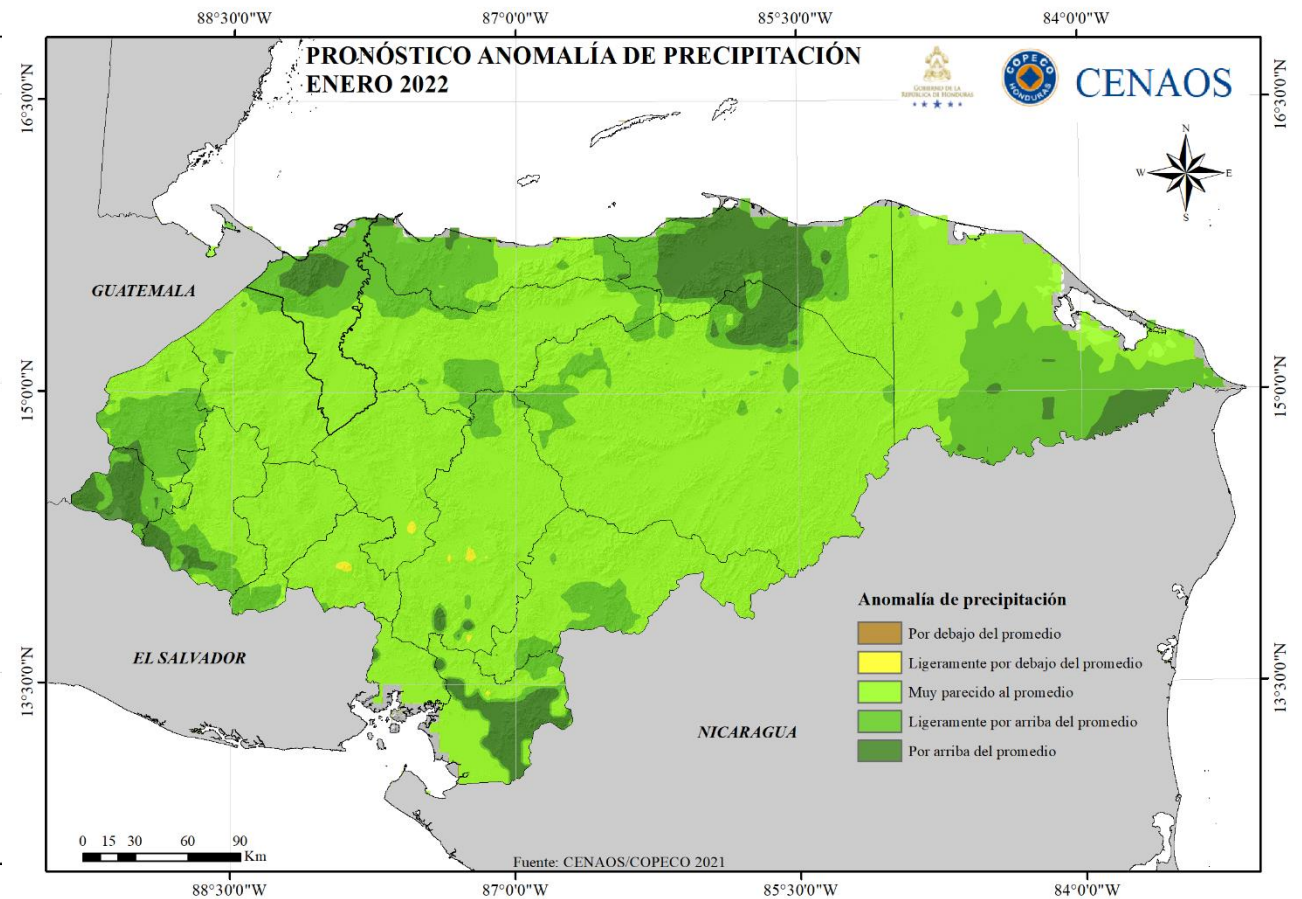
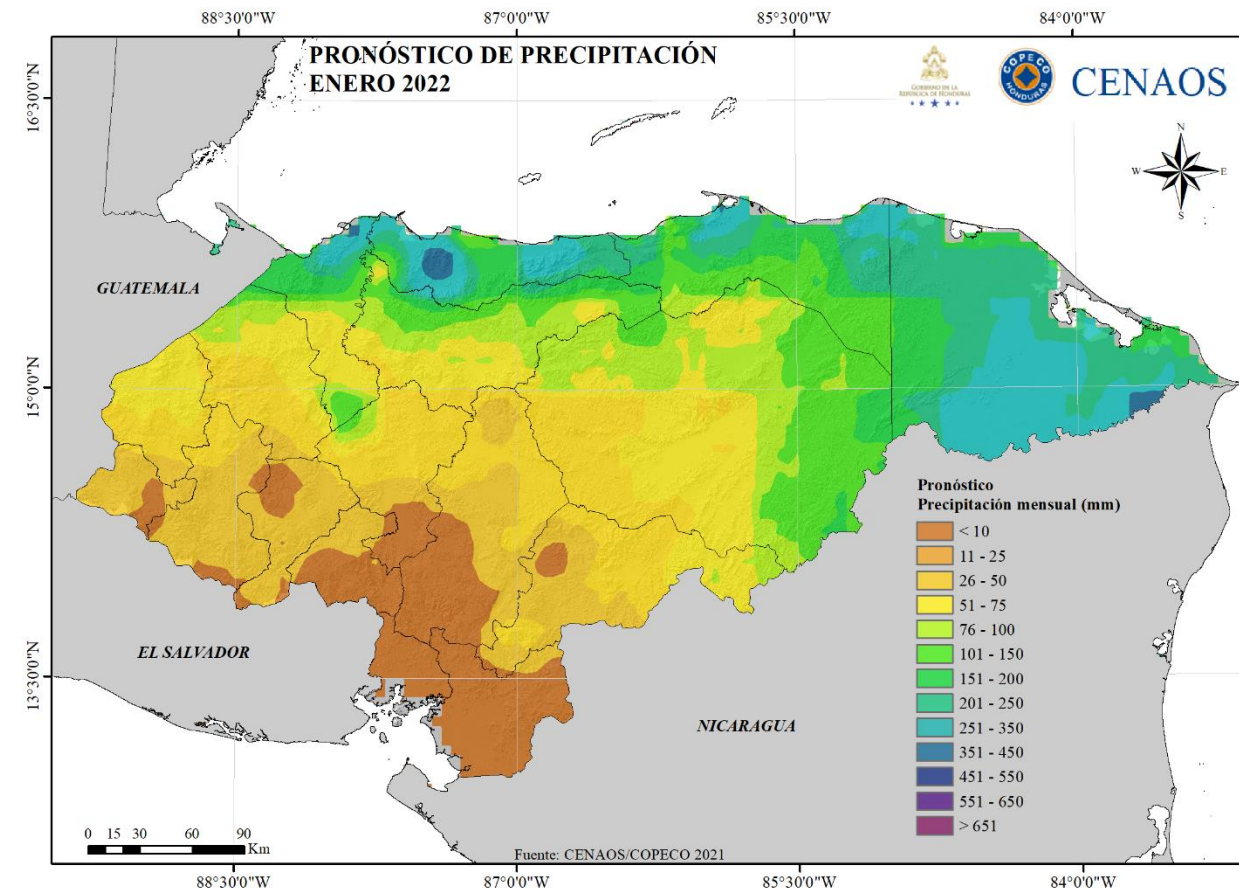
Pronóstico de lluvia Noviembre 2021



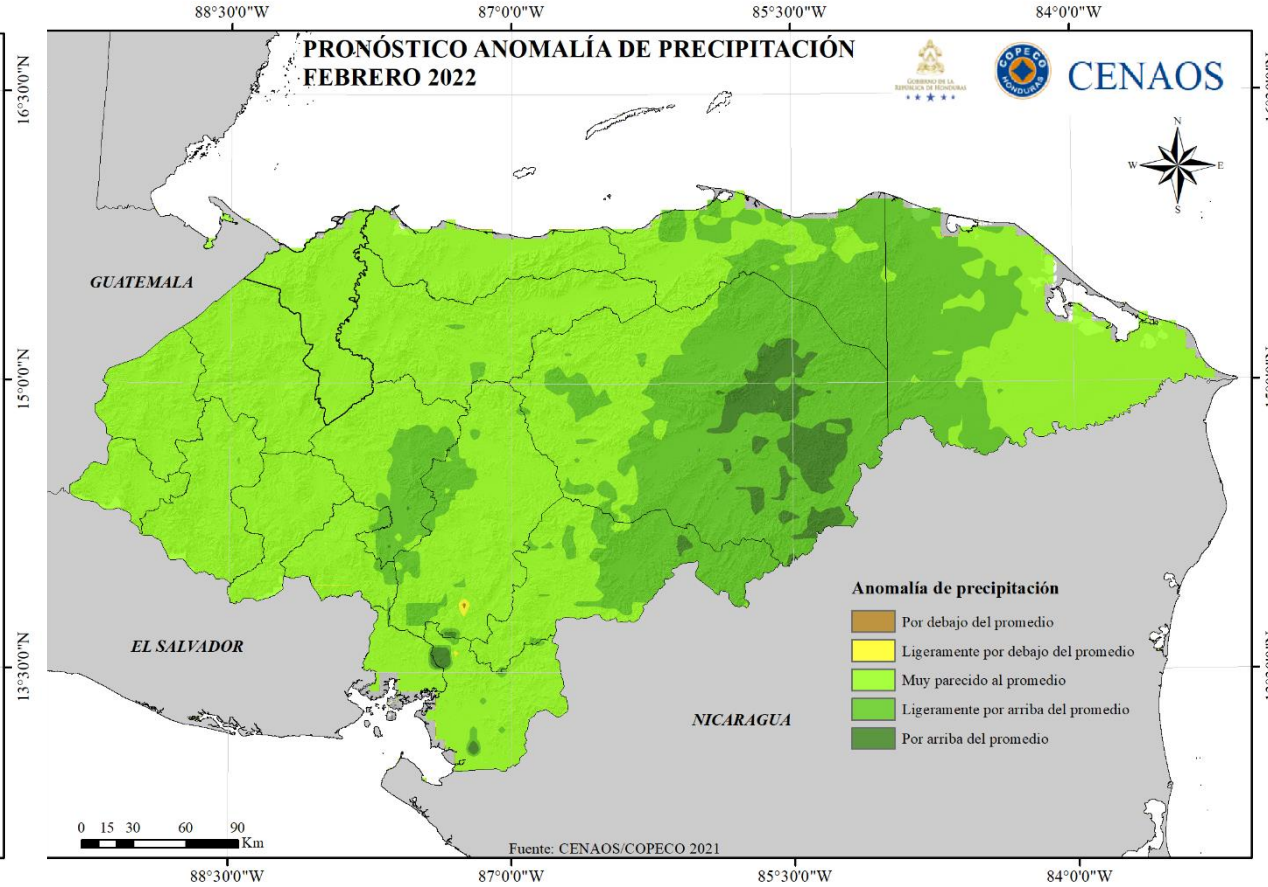
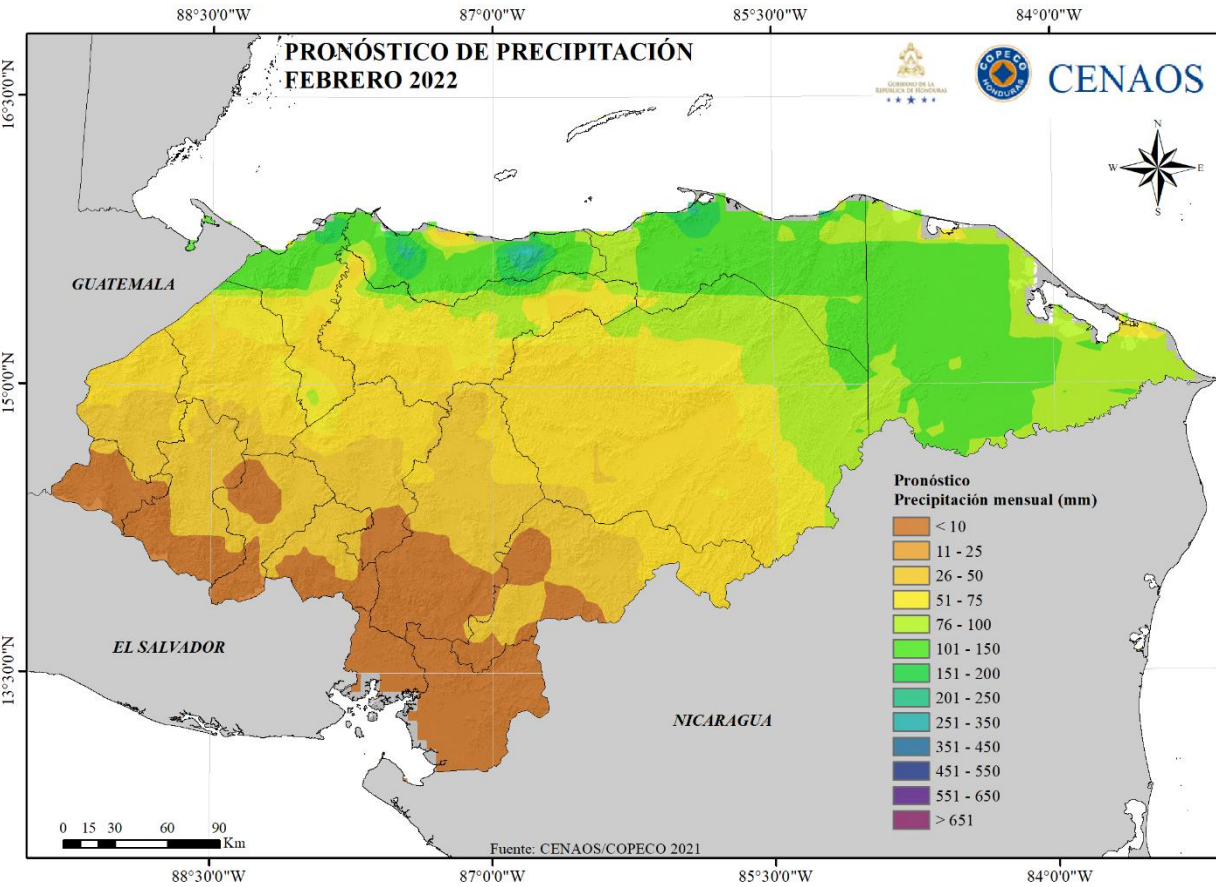
Pronóstico de lluvia Diciembre 2021



Pronóstico de lluvia Enero 2022



Pronóstico de lluvia Febrero 2022



Pronóstico de lluvia Choluteca 2021

	1_5_Oct	6_10_Oct	11_15_Oct	16_20_Oct	21_25_Oct	26_31_Oct	1_5_Nov	6_10_Nov	11_15_Nov	16_20_Nov	21_25_Nov	26_30_Nov	1_5_Dic	6_10_Dic	11_15_Dic	16_20_Dic	21_25_Dic	26_31_Dic
Promedio	72.2	94.1	69.5	59.2	35.6	50.6	19.5	46.6	7.0	9.5	4.6	2.0	3.1	33.7	1.3	0.7	0.7	0.9
Pronóstico	108.2	90.9	143.6	105.7	6.6	47.0	1.9	0.1	1.6	55.8	5.1	0.4	0.4	0.0	0.0	0.0	3.9	4.1

Pronóstico de lluvia Catacamas 2021

	1_5_Oct	6_10_Oct	11_15_Oct	16_20_Oct	21_25_Oct	26_31_Oct	1_5_Nov	6_10_Nov	11_15_Nov	16_20_Nov	21_25_Nov	26_30_Nov	1_5_Dic	6_10_Dic	11_15_Dic	16_20_Dic	21_25_Dic	26_31_Dic
Promedio	29.0	54.8	30.3	23.7	19.8	27.0	16.6	38.0	10.3	11.8	8.8	10.5	6.8	35.1	7.7	5.4	6.3	8.6
Pronóstico	54.2	24.3	20.4	19.1	16.9	12.0	17.9	3.0	9.7	7.5	2.5	6.7	6.7	9.2	3.8	4.5	6.7	5.0

<https://centroamerica.aemet.es>

GRACIAS POR SU ATECIÓN



CENAOS

cenaos.copeco.gob.hn